



MATT & ANGIE CROSSER ARTIST MISSIONARY

April 2011 ~ Vol. 13, No. 4

Send tax deductible donations to:
Team Expansion
12129 E 25th ST
TULSA OK 74129

For IRS tax purposes, our names cannot appear anywhere on the check!

mcrosser@teamexpansion.org

918.398.9351
918.850.9828

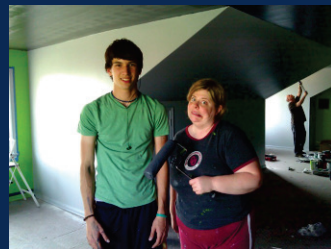
Team Expansion's Mission Statement
Transforming communities among the unreached by planting Biblical churches.

Team Expansion's Purpose
Throughout the history of Team Expansion, our purpose has remained the same – to work together in teams in order to establish viable, multiplying communities of believers in some of the least reached places on the earth. Simply, we are church planters.

Team Expansion Statistics
Team Expansion currently includes more than 300 workers serving in more than 40 countries. To date, we've planted more than 180 churches and baptized more than 10,000 believers around the world.

That New Office Smell

It's amazing what a difference a fixed office will do. I think I did a fairly good job of learning how to have a portable office from an empty classroom at church, to coffee shops, to our dining room table and to a small space in our bedroom. However, it doesn't compare to having my art table, books from Italy, resource/reference material and space to create. The drywall was completed, allowing us to paint, which left only new carpeting and moving in for me to start in my new office on the top floor of the 2:20 Center. The 2:20 Center is a ministry house that sits directly behind Highland Park Christian Church and houses the H.I.M. counseling ministry and future location of a distribution center for those in need.



Jacob and Angie in front of their masterpiece!

The day before we moved my office furniture and supplies, we found out that our storage unit had been burglarized. Fortunately, they didn't take all our things, but they opened every box of books, receipts and dumped them on the floor. Some of the books have cut marks where they knifed open the boxes to see what was inside. The thieves got away with a few things, but most was left. I moved into the office anyway, and started working out of it immediately.

Soon, we heard they had captured the thieves. Apparently it was a crime ring which had hundred's of victims. The police recovered some of our things, and later I

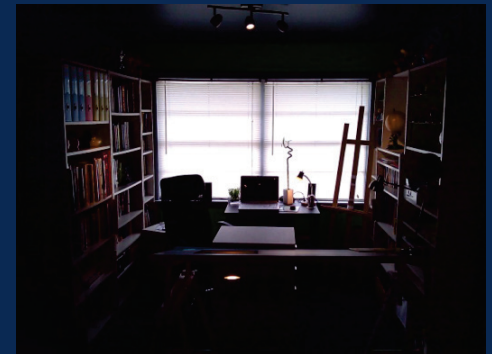
found some of it at a local resale store. We were thankful and surprised to get any of it back.



Kohl getting his green on. It's just the beginning!

In the next issue, we'll show you many things that we have produced for the new Jump VBS that is almost done! Soon any church that wants to support Team Expansion missions and use a free VBS curriculum with a focus on missions will have the option!

If you are in the neighborhood and want to check out my new office, I am there almost every day of the week. Drop me an email or call me to make sure I'm there. Thanks for partnering with us, your prayer and financial support mean so much!
In Christ, Matt & Angie



The final setup. Now, where did I put my pen?

FIND US ON ONLINE



Find Matt on Twitter and Facebook:
Twitter: <http://twitter.com/mcrosser>
Facebook: <http://www.facebook.com/mattcrosser>



The Crossers Life - about our life and ministry
Blog: <http://www.thecrossersblog.com>
Twitter: <http://twitter.com/thecrossers>
Facebook: <http://bit.ly/thecrosserslifeonfb>



Matt's Sketch Pad - highlighting various personal and ministry art projects
Blog: <http://www.mattsketchpad.com>
Twitter: <http://twitter.com/mattsketchpad>
Facebook: <http://bit.ly/mattsketchesonfb>



Notes from the President



Dear Friend of the Great Commission,

When friends ask my wife if she worries when I travel overseas, she explains, "Not really. When Doug's traveling, more people are praying for him than at any other time, so I figure he's safer than ever." Likewise, when you lift up the needs of your favorite Team Expansion missionary, you not only put at ease that worker's family members and friends, but you also speed along the progress of the gospel.

Paul wrote to the Colossians (from prison, interestingly enough), "Pray for us, too, that God may open a door for our message, so that we may proclaim the mystery of Christ, for which I am in chains. Pray that I may proclaim it clearly, as I should." These words are engraved on the chimney of a unique double-sided fireplace in the Fern Creek Christian Church Prayer Pavilion here at Emerald Hills. We thank you for bringing them to life for your favorite worker. And thank you for your support of Team Expansion's global vision of transforming communities among the unreached by planting churches.

Hopefully, Doug Lucas

Our Team Creative Arts

Please pray for the other members of Team Expansion International Service's staff. Lift up in the prayer the projects that the other members of the Creative Arts team are working on.

Shauna Peterson
Carla Cassel
Nathan Holt
Betty Byrd - director

Please pray for them as you pray for us!

Representative Elders

Jimmy Foreman
Sandusky Avenue Christian Church

Jayson & Janice French
Christ In Youth

Pastors of Encouragement

John & Judy Webb
Hope International University

Monthly Finances

Monthly Expense Recap For March 2011

Benefits	
100 · Salary	1,287.17
110 · Medical Insurance	161.00
111 · Special Medical Expense	322.67
130 · Social Security	550.00
180 · Contributions	38.00
Education	
200 · Books/Periodicals	162.30
220 · Conferences/Classes	300.48
Christian Education	
320 · Hospitality	14.31
Office	
650 · Supplies in the States	878.69
660 · Mission Phone	131.48
661 · E-Mail	73.00
Promotion/Representation	
700 · For More Support	58.20
720 · Newsletters	15.00
730 · Reporting to Supporters	15.00
Travel	
800 · Car/Transportation	123.18
Miscellaneous	
920 · Banking Fees	23.00
Total	4,153.48

Monthly Receipts Recap For March 2011

		Total
Individuals (9)		\$685.00
Churches (5)		\$4350.00
Edmond CC	650.00	
FCC - Sapulpa	200.00	
Highland Park CC	2,100.00	
Osage Hills CC	500.00	
Sunnybrook CC	900.00	
TOTAL		\$5,035.00

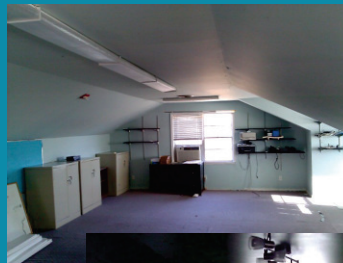
Running Ledger

March Beginning Balance*	\$ 64.40
March 2011 Receipts	+ 5035.00
	\$ 5099.40
March 2011 Expenses	\$4153.48
March 2011 Ending Balance	\$ 945.92

The ending balance listed for February in the last newsletter was incorrect due to discrepancies in QuickBooks. It reflected a balance of - 8,751.95. The actual balance of the bank account was much higher at \$64.40. There were some deposits recorded incorrectly which caused the inaccuracy.

Project Showcase

My new office is located in the top floor of the 2:20 Center in Tulsa. It is a ministry house that sits directly behind Highland Park Christian Church and houses H.I.M. counseling and future home to distribution center for those in need. Here are some before and after pictures of the renovation.



Prayer (Requests & Praises)

- * Pray as we finish the new VBS curriculum for Team Expansion to be available in 2011.
- * Pray for money to come in, offsetting the loan which enabled our trip to Italy last October.
- * Pray as we create a new Team Expansion website for kids.
- * Pray for us as we redub the audio on 32 kids' videos to be used in a closed country.
- * Pray while we work on brand new kids' videos and curriculum to be used around the world.
- * Pray as Matt does logos, promotional materials & for the people that will see them in foreign lands.
- * Pray for Matt & Angie as they live with Matt's brother, Kevin, caring for him and his kids while he recovers from Traumatic Brain Injury, as well as 24 hour nursing approval.
- * Pray for Angie as she does daily needed tasks that keep the nuts and bolts of our lives going.
- * Pray for Angie as she teaches children in preschool.
- * Pray for us to be leaders in our family, church and community.
- * Pray a prayer of thanks for the new office and all the resources that will be created there!

Let us know if you want to be a Prayer Partner for our artistic outreach role in missions!