



MATT & ANGIE CROSSER ARTIST MISSIONARY

September 2011 ~ Vol. 13, No. 9

Send tax deductible donations to:

Team Expansion
12129 E 25th ST
TULSA OK 74129

For IRS tax purposes, our names cannot appear anywhere on the check!

mcrosser@teamexpansion.org

918.398.9351
918.850.9828

Team Expansion's Mission Statement
Transforming communities among the unreached by planting Biblical churches.

Team Expansion's Purpose
Throughout the history of Team Expansion, our purpose has remained the same – to work together in teams in order to establish viable, multiplying communities of believers in some of the least reached places on the earth. Simply, we are church planters.

Team Expansion Statistics
Team Expansion currently includes more than 300 workers serving in more than 40 countries. To date, we've planted more than 180 churches and baptized more than 10,000 believers around the world.

Gathering in the Gathering Place

The summer is winding down. After having the hottest summer on record in Oklahoma, we are looking forward to feeling some cooler weather. Along with football, the fair, and cool weather comes a Team Expansion reoccurring project. That project is the TELL magazine. This magazine is Team Expansion's method for highlighting the various mission fields where our missionaries exist around the world. It's described as a Log of Love which is full of stories, articles, news, and opportunities from our workers and projects around the world.

As part of the Creative Arts team I am somewhat involved in the TELL process, even though it doesn't fall under one of my direct responsibilities. I was tasked with highlighting a Team Expansion mission field in the New Orleans area by writing an article and providing illustrations.

After Hurricane Katrina hit, there was a great need for short term relief and long term aid to the ravaged area around the gulf. Team Expansion workers launched an organized plan for helping those in need and then becoming part of the community around New Orleans.

After years of rebuilding homes and the community, an opportunity arose to take an old bowling alley and turn it into a community magnet. Fast forward a few years and they are preparing to move into what's called the Gathering Place. The Gathering Place is designed to be a center where the community gathers. It will include youth outreach, host community events, offer counseling services and more. In October



Above - Dilapidated bowling alley. Below - Transformed building into The Gathering Place, home of community events, youth outreach, counseling and more.

they will start meeting there for worship and biblical instruction. If you would like to learn more about this work and how they began, look for the upcoming issue of TELL. If you are on our paper mailing list, you will get one in the mail. When it is ready, you can also get a pdf version at Team Expansion's website by going to <http://bit.ly/tellmag>. There you can also read previous issues. On the back side of this newsletter you can see some of my illustration work for this article. To find out even more about The Gathering Place you can go to there website at <http://bit.ly/gccnews>. Thanks for partnering with us!

In Christ, Matt & Angie

FIND US ON ONLINE



Find Matt on Twitter and Facebook:
Twitter: <http://twitter.com/mccrosser>
Facebook: <http://www.facebook.com/mattcrosser>



The Crossers Life - about our life and ministry
Blog: <http://www.thecrossersblog.com>
Twitter: <http://twitter.com/thecrossers>
Facebook: <http://bit.ly/thecrosserslifeonfb>



Matt's Sketch Pad - personal and ministry art projects
Blog: <http://www.mattskechpad.com>
Twitter: <http://twitter.com/mattskechpad>
Facebook: <http://bit.ly/mattskechesonfb>



Notes from the President



Dear friend of the Great Commission,

Those who know me well know that I have thing for flashlights. You see, when I was an eleven-year-old in boy scouts, my flashlight batteries ran down while on a [very long] hike in a [very primitive, wet and scary] cave. I vowed never to be without light again. So I carry a flashlight in my pocket virtually everywhere I go. The thing is, it doesn't really take much. The light I carry has a low-light setting of just one lumen. But you might be shocked what a difference one lumen makes in a dark room. Odds are, your favorite Team Expansion missionary chose an unreached people group or city on purpose: Our hearts go out to those who are still in the dark. Likewise, when you pray, encourage, and give, you are sending the light to the darkest places on earth. You might argue that your gift isn't always huge. But the darker the night, the bigger the difference my one-lumen light can make. So next time you're wondering if your gift or prayer will really matter, step into a pitch-black room and light a single match. Your gift, your prayers, and your words can make all the difference in the world!

Grateful for the Light,
Doug Lucas - President, Team Expansion

Our Team Creative Arts

Please pray for the other members of Team Expansion International Service's staff. Lift up in the prayer the projects that the other members of the Creative Arts team are working on.

Shauna Peterson
Carla Cassel
Nathan Holt
Betty Byrd - director

Please pray for them as you pray for us!

Representative Elders

Jimmy Foreman
Sandusky Avenue Christian Church

Jayson & Janice French
Christ In Youth

Pastors of Encouragement

John & Judy Webb
Hope International University

Monthly Finances

Monthly Expense Recap For August 2011

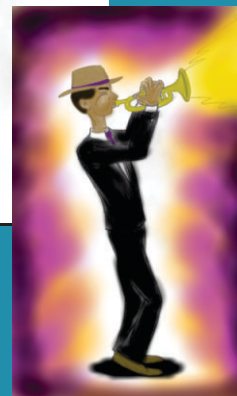
Benefits	
100 · Salary	2,602.27
111 · Special Medical Expense	70.20
130 · Social Security	550.00
180 · Contributions	278.00
Education	
200 · Books/Periodicals	490.55
Christian Education	
300 · Printed Material	18.23
320 · Hospitality	15.20
Office	
650 · Supplies in the States	500.17
660 · Mission Phone	83.16
661 · E-Mail	186.75
Promotion/Representation	
700 · For More Support	49.39
720 · Newsletters	59.34
730 · Reporting to Supporters	21.00
740 · Home Office	100.00
Travel	
800 · Car/Transportation	199.52
TOTAL	5,223.78

Monthly Receipts Recap For August 2011

Individuals (8)	Total
	\$755.00
Churches (5)	\$3000.00
Edmond CC	650.00
First CC Sapulpa	100.00
Highland Park CC	1050.00
Osage Hills CC	300.00
Sunnybrook CC	900.00
TOTAL	\$3755.00
Running Ledger	
Aug Beginning Balance	\$ 2168.91
Aug 2011 Receipts	+ 3755.00
	\$ 5923.91
Aug 2011 Expenses	\$5223.78
Aug 2011 Ending Balance	\$ 700.13

Project Showcase

One of my tasks this month was to author and illustrate an article for Team Expansion's TELL magazine. The article is on a mission work in the New Orleans area and comes out around November. Below are some illustrations that I drew for it in various stages.



for more art projects go to www.mattskechpad.com

Prayer (Requests & Praises)

- * Pray for those receiving the TELL, that they would see God working throughout the world and find how to be involved.
- * Pray for those impacted by the Gathering Place in Louisiana.
- * Pray for Matt's health. Still unknown cause for pain/swelling.
- * Pray for all the art projects that Matt does for missions.
- * Pray for money to go toward our 2010 Italy moving loan.
- * Pray for Matt & Angie as caretakers for Matt's brother, Kevin.
- * Pray for Matt & Angie as they "parent" a niece and nephews.
- * Pray for Kevin to stay out of the hospital for now. He's had four admissions this year. Last year, he had none!
- * Pray for Kevin to recover from traumatic brain injuries.
- * Pray for Angie as a homemaker and preschool teacher.
- * Pray for us to be leaders in our family, church and community.

Email us if you want to be a Prayer Partner!

Mobile Edition

Would you rather read our newsletter on your phone or tablet? Just scan the QR code below to download a pdf.



September 2011